

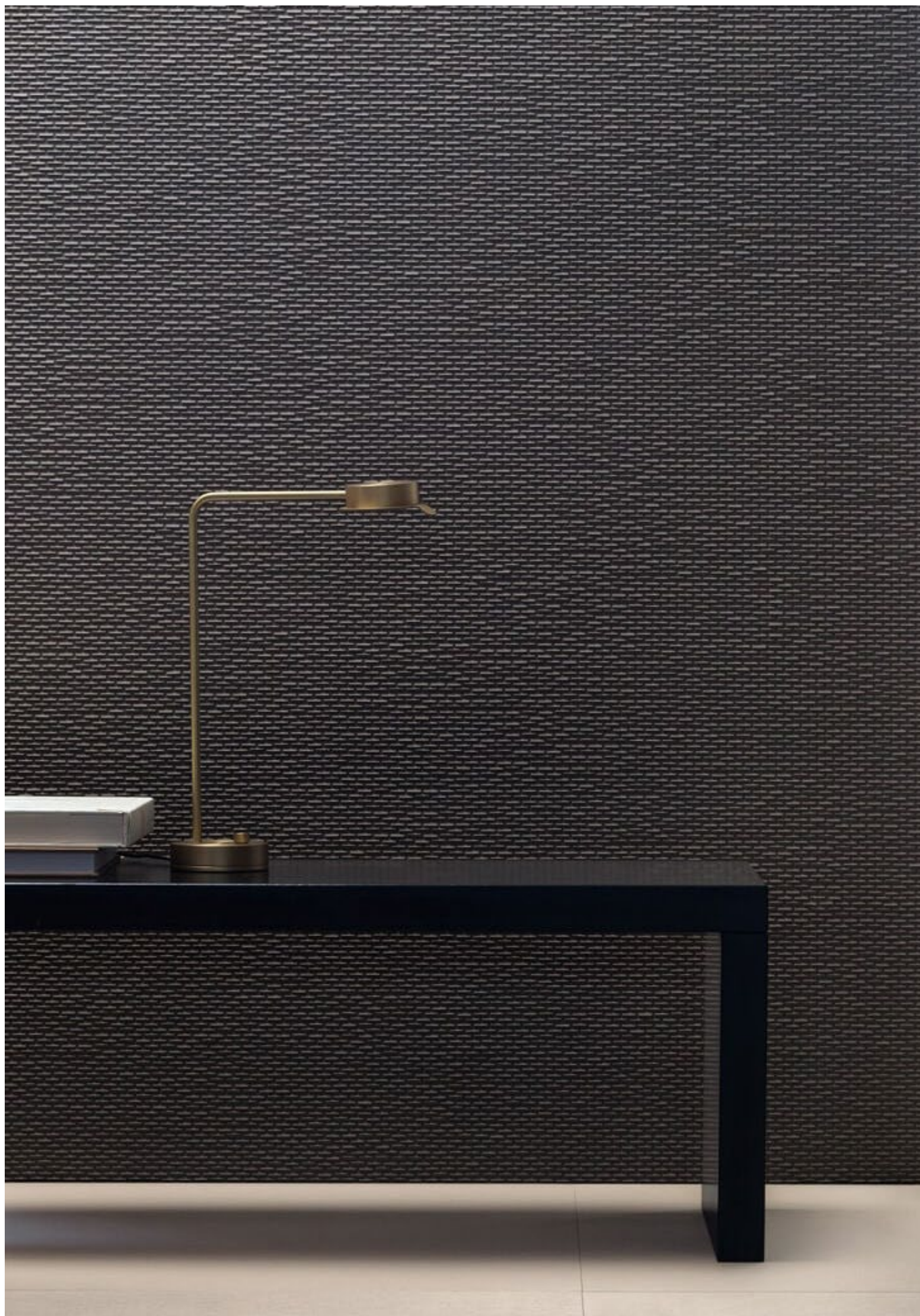
# Mutina

Phenomenon  
by Tokujin Yoshioka



Phenomenon Mosaics





Colors

RAIN A



Rain A Bianco



Rain A Grigio



Rain A Fango



Rain A Nero

RAIN B



Rain B Bianco



Rain B Grigio



Rain B Fango



Rain B Nero

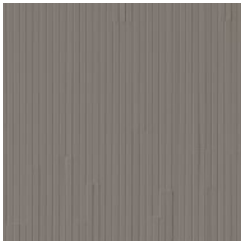
RAIN C



Rain C Bianco



Rain C Grigio



Rain C Fango



Rain C Nero



grout: calce 01



grout: cream 45



grout: fango 61



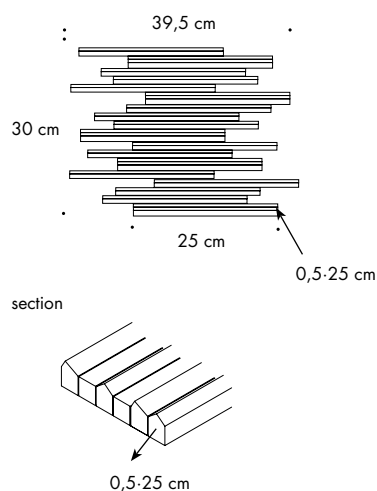
grout: nero 06

# Rain Mosaics

## General information

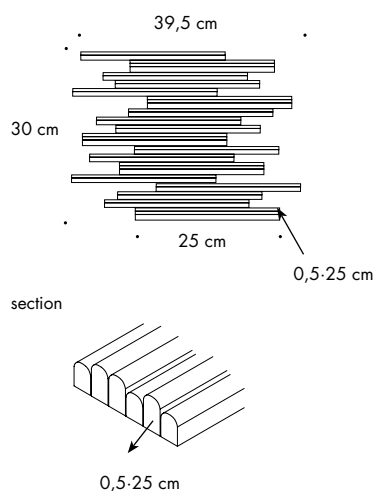
collection	Phenomenon
design	Tokuji Yoshioka, 2010 – 2013
production	Artisanal
material	Homogeneous unglazed porcelain stoneware straws, obtained by pressing and fixed on net
thickness	RAIN A: min 5 mm - max 7 mm RAIN B: min 5 mm - max 7 mm RAIN C: 5 mm
nominal sizes	RAIN A: net 25.30 cm (net 9 7/8" . 12") RAIN B: net 25.30 cm (net 9 7/8" . 12") RAIN C: net 25.30 cm (net 9 7/8" . 12")
specification	<ul style="list-style-type: none"> <li>– 4 colors Bianco, Grigio, Fango, Nero</li> <li>– 3 mosaic card shapes on net</li> <li>– 4 matching color grout</li> </ul> <p>– The mosaic is assembled in sheets to give a "handmade look" to the surface. Rain A-B-C, Honeycomb A-B, Rock, Air, Wind, and Hexagon of the series Phenomenon represent the finest of modern-day Italian craftsmanship.</p> <p>– Each mosaic card is individually pressed with a bespoke 100-holes mould, expressly created to achieve a materic and artisanal feeling, then fired through a bespoke, patented, process.</p> <p>– Mutina patented production process and machines (Industrial Patent filed on 02/09/2010 under number MO2010A000247)</p> <p>– The cards are manually assembled accurately by expert hands to build a unique, innovative pattern.</p>
awards	ICFF Editors Award Material 2011, Wallpaper Design Award 2011, Edida 2011, Selected for Adi Design Index 2011, Love Tag Azure Magazine 2012, Red Dot Design Award 2012, Interior Innovation Award 2014, Best of Best 2014
patents	Registered design n° 001912999-0011 – date of registration: 06/09/2011
category	UNI EN 14411 App G (BIA group) UGL

RAIN A



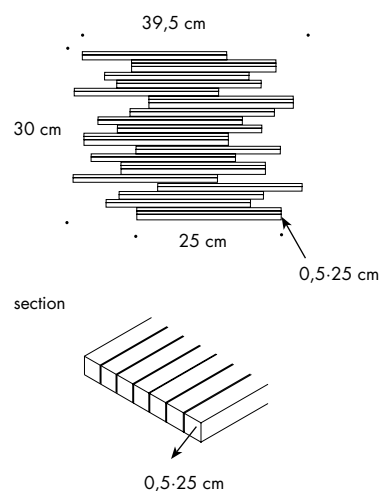
net 25.30 cm  
net 9 7/8" . 12"

RAIN B



net 25.30 cm  
net 9 7/8" . 12"

RAIN C

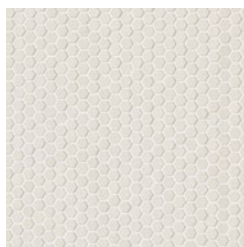


net 25.30 cm  
net 9 7/8" . 12"



## Colors

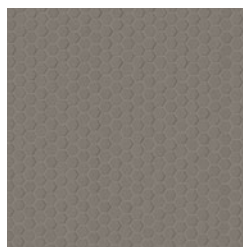
### HONEYCOMB A



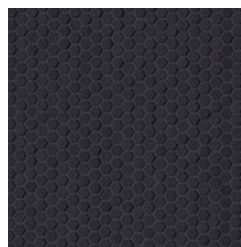
Honeycomb A Bianco



Honeycomb A Grigio

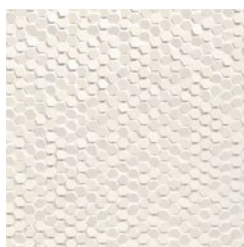


Honeycomb A Fango



Honeycomb A Nero

### HONEYCOMB B



Honeycomb B Bianco



Honeycomb B Grigio

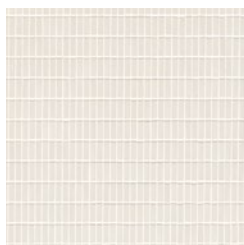


Honeycomb B Fango

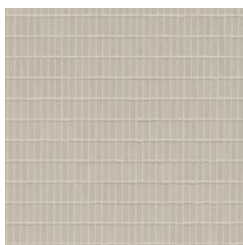


Honeycomb B Nero

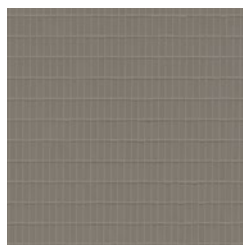
### ROCK



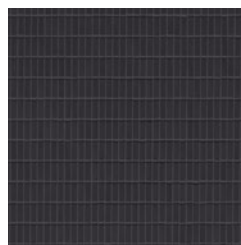
Rock C Bianco



Rock C Grigio



Rock C Fango



Rock C Nero

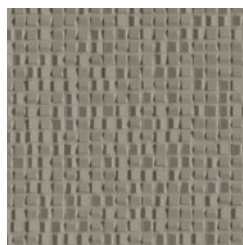
### AIR



Air Bianco



Air Grigio



Air Fango



Air Nero

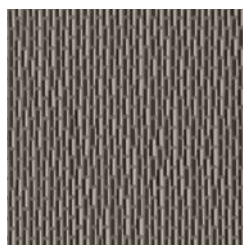
### WIND



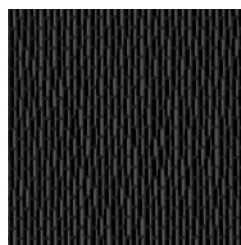
Wind Bianco



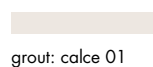
Wind Grigio



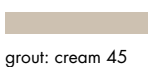
Wind Fango



Wind Nero



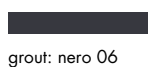
grout: calce 01



grout: cream 45



grout: fango 61



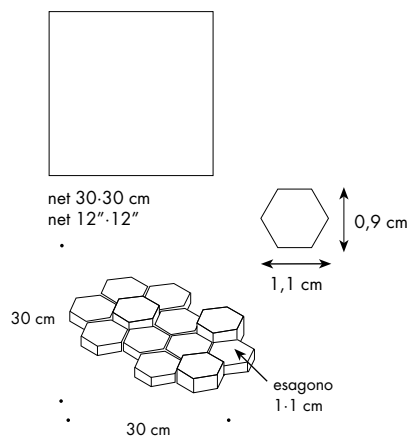
grout: nero 06

# Mosaics: Honeycomb, Rock, Air, Wind

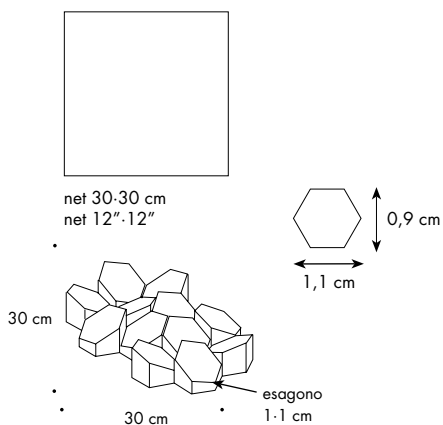
## General information

collection	Phenomenon
design	Tokuji Yoshioka, 2010 - 2013
production	Artisanal
material	Homogeneous unglazed porcelain stoneware tesserae, obtained by pressing and fixed on net
thickness	HONEYCOMB A: min 5 mm - max 6 mm HONEYCOMB B: min 6 mm - max 8 mm ROCK: 5 mm AIR: 8 mm WIND: 7 mm
nominal sizes	HONEYCOMB A: rete/net 30.30 cm (rete/net 12".12") HONEYCOMB B: rete/net 30.30 cm (rete/net 12".12") ROCK: rete/net 29.29 cm (rete/net 11 13/16".11 13/16") AIR: rete/net 30.30 cm (rete/net 12".12") WIND: rete/net 25.25 cm (rete/net 10".10")
specification	<ul style="list-style-type: none"> <li>– 4 colors Bianco, Grigio, Fango, Nero</li> <li>– 5 mosaic card shapes on net</li> <li>– 4 matching color grout</li> </ul> <ul style="list-style-type: none"> <li>– The mosaic is assembled in sheets to give a "handmade look" to the surface. Rain A-B-C, Honeycomb A-B, Rock, Air, Wind, and Hexagon of the series Phenomenon represent the finest of modern-day Italian craftsmanship.</li> <li>– Each mosaic card is individually pressed with a bespoke 100-holes mould, expressly created to achieve a materic and artisanal feeling, then fired through a bespoke, patented, process.</li> <li>– Mutina patented production process and machines (Industrial Patent filed on 02/09/2010 under number MO2010A000247)</li> <li>– The cards are manually assembled accurately by expert hands to build a unique, innovative pattern.</li> </ul>
awards	ICFF Editors Award Material 2011, Wallpaper Design Award 2011, Edida 2011, Selected for Adi Design Index 2011, Love Tag Azure Magazine 2012, Red Dot Design Award 2012, Interior Innovation Award 2014, Best of Best 2014
patents	Registered design n° 001912999-0011 – date of registration: 06/09/2011 Registered design n° 002336909-0001/0004 – date of registration: 31/10/2013
category	UNI EN 14411 App G (BIA group) UGL

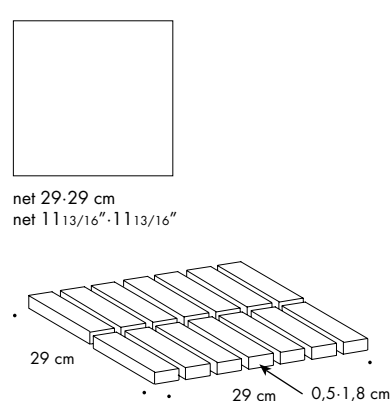
HONEYCOMB A



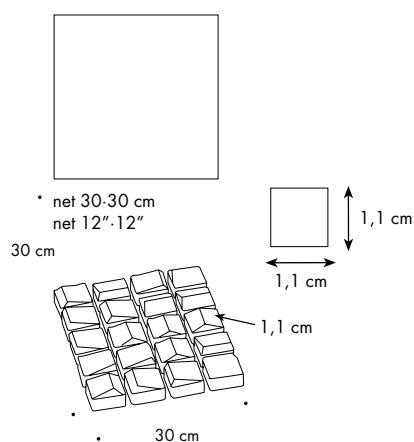
HONEYCOMB B



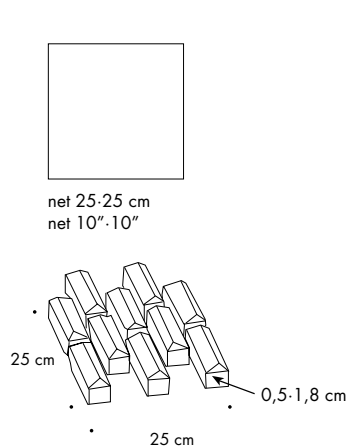
ROCK



AIR



WIND



## Laying and maintenance tips

use	Floor (ROCK, HONEY A), wall (ROCK, HONEY A, WIND, AIR, HONEY B, RAIN A-B-C) – indoor, outdoor.
installation	Lay on perfectly flat, dry walls.
recommended adhesive	NON-RAPID-DRYING adhesive for porcelain stoneware to make it easier to fix the sheets.
recommended joints	2mm joints.
recommended fillers	CEMENT-BASED GROUT: (all mosaics). Grout 0.5 m <sup>2</sup> at a time and wash thoroughly with clean water. Remove all traces of grout carefully before it dries completely. EPOXY GROUT: (rock, honey A only). Grout 0.5 m <sup>2</sup> at a time and wash thoroughly with clean water. Remove all traces of grout carefully before it dries completely.
cleaning at the end of installation	CEMENT-BASED GROUT: Buffered acid (e.g. DETERDEK PRO by FILA, or similar). Wet the floor with water, dilute the product 1:5 with water and pour it on the floor. Wait for 2 or 3 minutes then use a white scotch brite pad and rinse well with clean water. EPOXY GROUT: Alkaline detergent (e.g. FILA CR10 by FILA). FILA CR10: apply pure, wait for 30 minutes then use a green scotch brite pad. SILICONE: Solvent for silicone (e.g. FILA ZERO SIL.). Pour it straight onto the stain, wait for 20 minutes and remove the mark using scotch brite. PAINT: Can usually be removed using water, but if resin-based paints or particular enamels have been used, it is best to ask the manufacturer which solvent is most suitable. RUST: stain remover es. FILA NO RUST. Apply the product onto the stain, leave for 15 minutes, remove the residue and rinse thoroughly.
general cleaning (installed tiles)	You are recommended to use ordinary neutral detergent diluted in water. Avoid using acid or alkaline products, waxes and/or impregnants. During ordinary cleaning it is recommended to use extremely abrasive items (such as scourers and iron or steel sponges) as little as possible. This recommendation must be adhered to rigorously in the case of tiles with a glossy surface finishing as they are more susceptible to the risk of scuffs, scratches and loss of shine, etc. In the event of heavy dirt or particularly textured surfaces, use an alkaline detergent and rinse after washing. For large surfaces, the use of a floor washing machine is recommended. During every-day cleaning procedures, it is necessary to remember that certain types of dirt (dust, sand) increase the abrasive effect of foot-traffic. Therefore we recommend that you avoid bringing in this type of dirt, which comes in from the outside, by placing a door-mat at the entrance.
calibers (real size)	–