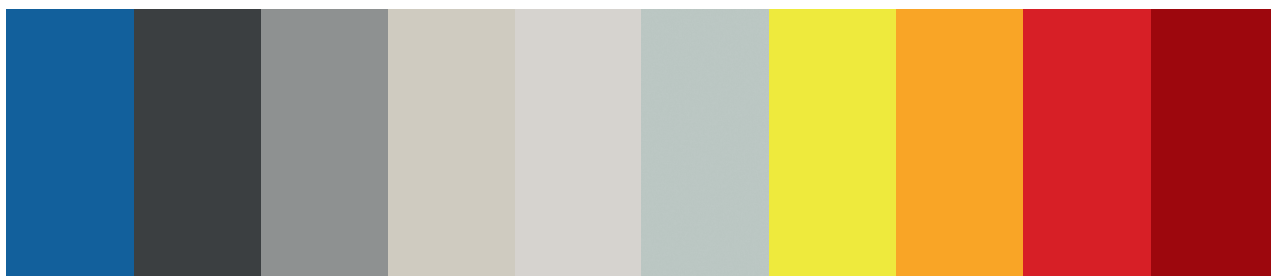
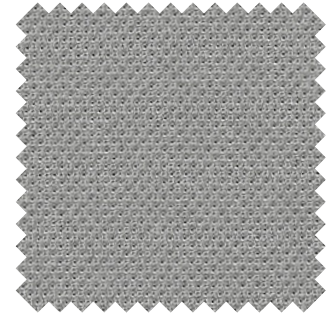


COLOURS AND FINISHES



ATLANTIC

Atlantic is designed with a straightforward, light structure and a discreet relief effect, which adds play and depth to both surface and colour. It is a strong base fabric with visual values ranging from quiet to fresh and sporty looks.



Specifications

- **Category B**
- **Composition** | 100% polyester
- **Weight** | 530 g/lm
- **Width** | 150 cm
- **Abrasion** | Martindale 110.000 turns EN ISO 12947-2; Double Rubs Wyzenbeek 100.000 turns ASTM D4157-07
- **Pilling** | Grade 4-5 EN ISO 12945-2; Grade 5 ASTM D3511
- **Light fastness** | Grade 5-7 EN ISO 105-B02; Grade 4-5 AATCC 16
- **Rubbing fastness** | Grade 4-5/4-5 (wet/dry) EN ISO 105x12; Grade 4-5/4-5 (wet/dry) AATCC 8 or 116
- **Flammability** | ASTM E 84 Class I; CA TB 117-2013 BS EN 1021-2 Match; BS EN 1021-1 Cigarette; ÖNORM B 3825-B1-3800-Q1 UK
- **Environment** | 100% recyclable polyester
- **Labelling** | STANDARD 100 by OEKO-TEX®, EU Ecolabel®
- **Maintenance** | For normal maintenance and cleaning, use often the vacuum cleaner with appropriate part for fabric, and if necessary, cover the part with a soft cloth. For a deeper cleaning use a dry detergent for fabrics. Do not use anything petroleum based.
- **Colours availability** | 14 standard colours - 42 total colours

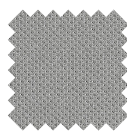
Colour scale



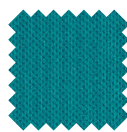
433 | Black



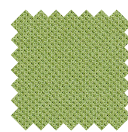
434 | Dark grey



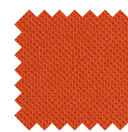
435 | Grey



436 | Petroleum blue



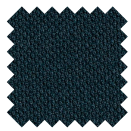
437 | Green



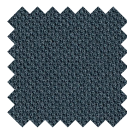
438 | Orange



439 | Red



441 | Dark green



455 | Azure Grey

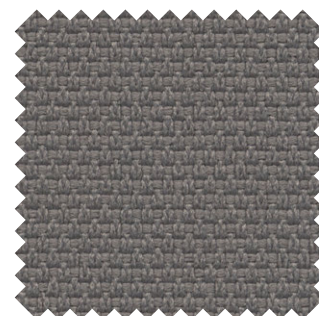


457 | Deep blue



MINI

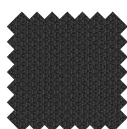
Mini is an elastic three-dimensional fabric made with the non-flammable yarn Trevira CS.



Specifications

- **Category B**
- **Composition** | 100% Trevisa CS
- **Weight** | 480 g/lm - 340 gr/m²
- **Width** | 140 cm
- **Abrasion** | Martindale 100.000 turns EN ISO 12947-2;
- **Pilling** | Grade 4-5 EN ISO 12945-2
- **Light fastness** | Grade 5-8 EN ISO 105-B02
- **Rubbing fastness** | Grade 4-5 EN ISO 105x12
- **Flammability** | UNI 9174 - 8456 Class C1; UNI 9175 Class 1 IM; DIN 4102 Class B1; NF 92501-7 Class M1; NF D 60013 Class AM18; EN 1021-1 & 2; BS Crib 5; BS 7176 Class Medium Hazard; EN 13773 Class 1; OENORM 3800-1 Class B1,Q1,TR1; California TB117; USA NFPA 701; USA NFPA 260; IMO Part 8 Upholstery
- **Environment** | 100% recyclable polyester
- **Labelling** | STANDARD 100 by OEKO-TEX®, EU Ecolabel®, Trevira CS®
- **Maintenance** | Brush any substantial, encrusted marks by hand, using a brush or spatula, then vacuum clean. Pre-clean with a neutral universal agent (incl. Possibility dry foam as well). After each cleaning remove any residual surfactant, using spray extraction.
- **Colours availability** | 7 standard colours - 51 total colours

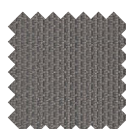
Colour scale



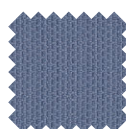
28A | Black



28F | Dark grey



28E | Grey



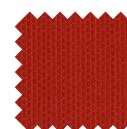
28C | Light blue



28D | Green



28H | Cadmium yellow

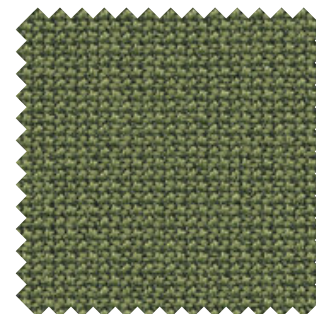


28B | Red



CURA

Cura is a multi-purpose, two-coloured upholstery fabric made from 98% post-consumer recycled polyester. Use Cura for office furniture or lounge seating to transform workplaces into homey interiors.



Specifications

- **Category C**
- **Composition** | 98% post-consumer recycle polyester/ 2% polyester
- **Weight** | 420 g/lm
- **Width** | 140 cm
- **Abrasion** | Martindale 100.000 turns EN ISO 12947-2; Double Rubs Wyzenbeek 100.000 turns ASTM D4157-07
- **Pilling** | Grade 4-5 EN ISO 12945-2; Grade 5 ASTM D3511
- **Light fastness** | Grade 5-8 EN ISO 105-B02; Grade 5 AATCC 16
- **Rubbing fastness** | Grade 4-5/4-5 (wet/dry) EN ISO 105x12; Grade 5/5 (wet/dry) AATCC 8 or 116
- **Flammability** | BS EN 1021 1&2 Cigarette and match; BS 5852 Part 1 0-1 Cigarette&match; CA TB 117-2013
- **Environment** | 98% recycled post-consumer polyester; 100% recyclable polyester
- **Labelling** | STANDARD 100 by OEKO-TEX®, EU Ecolabel®
- **Maintenance** | For normal maintenance and cleaning, use often the vacuum cleaner with appropriate part for fabric, and if necessary, cover the part with a soft cloth. For a deeper cleaning use a dry detergent for fabrics. Do not use anything petroleum based.
- **Colours availability** | 8 standard colours - 36 total colours

Colour scale



570 | Medium grey



571 | Grey blue



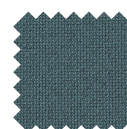
572 | Black



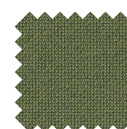
573 | Dark grey



574 | Blue



575 | Azure



576 | Green

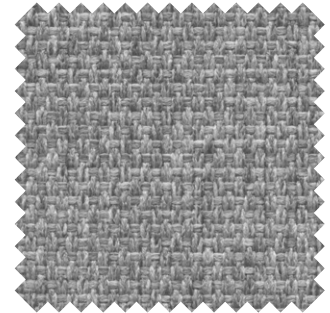


577 | Avio



MINI MELANGE

Mini Melange is a two nuances elastic three-dimensional fabric made with the non-flammable yarn Trevira CS.



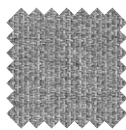
Specifications

- **Category C**
- **Composition** | 100% trevira CS
- **Weight** | 480 g/lm - 340 gr/m²
- **Width** | 140 cm
- **Abrasion** | Martindale 100.000 turns EN ISO 12947-2;
- **Pilling** | Grade 4-5 EN ISO 12945-2
- **Light fastness** | Grade 5-8 EN ISO 105-B02
- **Rubbing fastness** | Grade 4-5 EN ISO 105x12
- **Flammability** | UNI 9174 - 8456 Class C1; UNI 9175 Class 1 IM; DIN 4102 Class B1; NF 92501-7 Class M1; NF D 60013 Class AM18; EN 1021-1 & 2; BS Crib 5; BS 7176 Class Medium Hazard; EN 13773 Class 1; OENORM 3800-1 Class B1,Q1,TR1; California TB117; USA NFPA 701; USA NFPA 260; IMO Part 8 Upholstery
- **Environment** | 100% recyclable polyester
- **Labelling** | STANDARD 100 by OEKO-TEX®, EU Ecolabel®, Trevira CS®
- **Maintenance** | Brush any substantial, encrusted marks by hand, using a brush or spatula, then vacuum clean. Pre-clean with a neutral universal agent (incl. Possibility dry foam as well). After each cleaning remove any residual surfactant, using spray extraction.
- **Colours availability** | 9 standard colours - 51 total colours

Colour scale



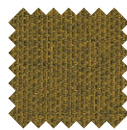
26E | Dark grey



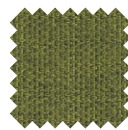
26A | Light grey



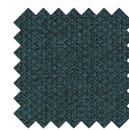
26F | Grey brown



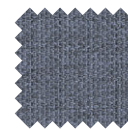
26G | Mustard yellow



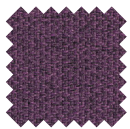
26D | Green



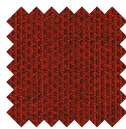
26L | Petroleum blue



26C | Light blue



26M | Liliac

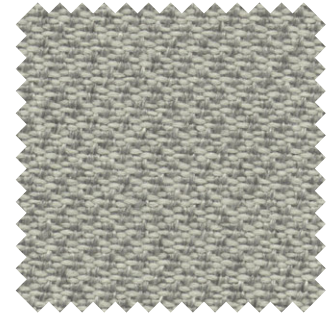


26B | Red



SEALIFE

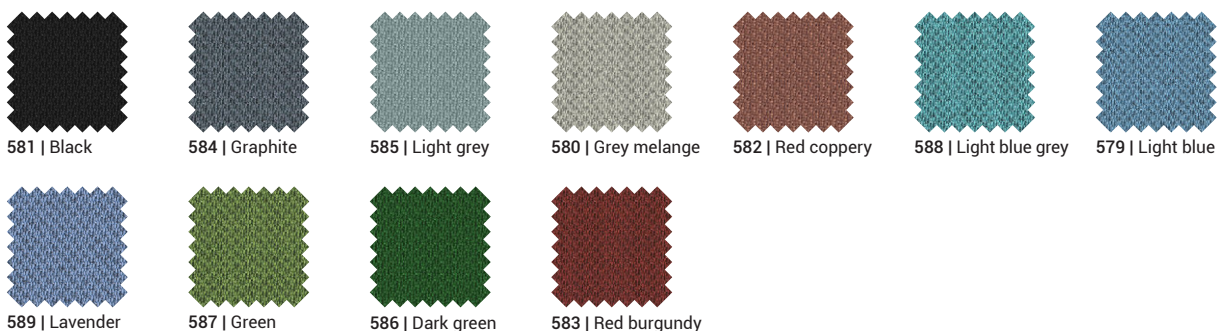
Structured fabric in Seaqual certified recycled polyester, containing upcycled marine plastic retrieved from oceans and beaches.



Specifications

- **Category C**
- **Composition** | 100% recycled polyester
- **Weight** | 460 g/lm - 330 gr/m²
- **Width** | 140 cm
- **Abrasion** | Martindale 100.000 turns EN ISO 12947-2;
- **Pilling** | Grade 4-5 EN ISO 12945-2
- **Light fastness** | Grade 5-8 EN ISO 105-B02
- **Rubbing fastness** | Grade 4-5 EN ISO 105x12
- **Flammability** | UNI 9175 Class 1 IM; EN 1021-1 & 2; BS 7176 Class Low Hazard; California TB 117-2013
- **Environment** | 100% recyclable polyester - SEAQUAL Certified
- **Labelling** | STANDARD 100 by OEKO-TEX®, Seaqual® Yarn, Global Recycled Standard
- **Maintenance** | For normal maintenance and cleaning, use often the vacuum cleaner with appropriate part for fabric, and if necessary, cover the part with a soft cloth. For a deeper cleaning use a dry detergent for fabrics. Do not use anything petroleum based.
- **Colours availability** | 11 standard colours - 30 total colours

Colour scale



SOTEGA

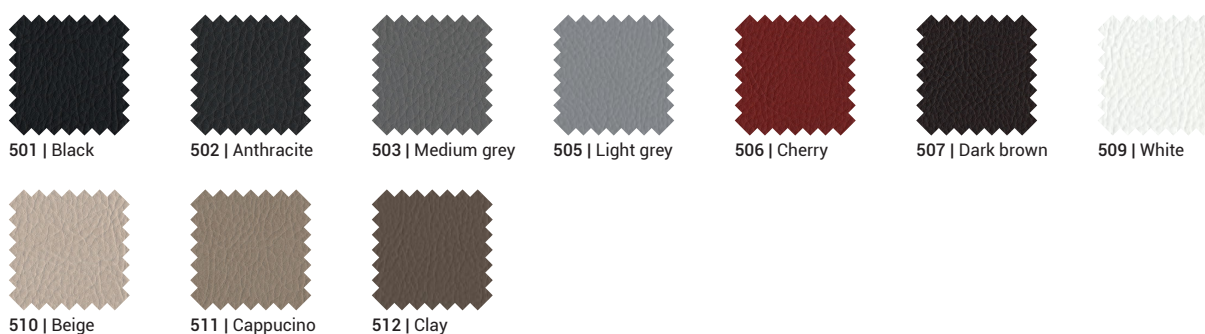
High quality upholstery fabric with soft nappa finish and a classic leather grain. Due to its natural look and touch one can hardly differentiate between this material and genuine leather.



Specifications

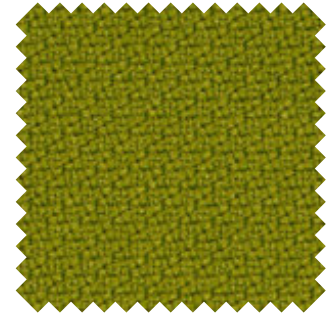
- **Category C**
- **Composition** | 1% PU-finish / 73% PVC-compound / 26% CO-fabric
- **Weight** | 780 g/lm
- **Width** | 150 cm
- **Abrasion** | Martindale 50.000 turns EN ISO 5470-2
- **Pilling** | n/a
- **Light fastness** | Grade 5 EN ISO 105-B02
- **Rubbing fastness** | n/a
- **Flammability** | n/a
- **Environment** | No AZO, Ca, FCKW; No PCP, PCB, PCT; No CH2O Formaldehyde
- **Labelling** | n/a
- **Maintenance** | For durable joy please clean regularly. Clean with warm water or a mild soap sud and a micro-fibre cloth or a soft hand brush. Stain caused by oil, fat or ink must be removed immediately. Do not use solvents, chloride, abrasive, chemical cleaning agents or wax polishes.
- **Colours availability** | 10 standard colours - 25 total colours

Colour scale



STEP

Step is unique in both texture and performance. With its delicate surface, Step is perceived as vivid and interesting.



Specifications

- **Category C**
- **Composition** | 100% Trevira CS
- **Weight** | 470 g/lm
- **Width** | 140 cm
- **Abrasion** | Martindale 100.000 turns EN ISO 12947-2; Double Rubs Wyzenbeek 100.000 turns ASTM D4157-07
- **Pilling** | Grade 4-5 EN ISO 12945-2; Grade 4-5 ASTM D3511
- **Light fastness** | Grade 5-7 EN ISO 105-B02; Grade 4-5 AATCC 16
- **Rubbing fastness** | Grade 4-5/4-5 (wet/dry) EN ISO 105x12; Grade 4-5/4-5 (wet/dry) AATCC 8 or 116
- **Flammability** | AM 18 - NF D 60-013 (only for fabric); BS EN 1021-1 Cigarette; BS EN 1021 1&2 Cigarette and match; BS 5852 Part 1 0-1 Cigarette and match; BS 5852 Crib 5; BS 7176 Medium Hazard; CA TB 117-2013; DIN 4102 B1; DIN EN 13501-1 B-s1; FAR/JAR 25.853 (a) (i) (ii); IMO MSC 307(88) Annex 1 part 8; MED Certificate IMO; NFP 92-503/504/505 M1; ÖNORM B 3825-B1-3800-Q1 UK; UNI 9175 Class 1 | EMME
- **Environment** | n/a
- **Labelling** | STANDARD 100 by OEKO-TEX®, EU Ecolabel®, Trevira CS®
- **Maintenance** | First absorb as much of the liquid as possible with plain white kitchen paper towelling or a cloth. If the spot has dried, remove as much as possible by vacuuming. Rub gently with a clean white cloth. Press a dry tea towel or piece of plain white kitchen roll against the fabric each time liquid is added so that moisture and impurities are absorbed. Use pure water without soap for the last washing.
- **Colours availability** | 8 standard colours - 57 total colours

Colour scale



346 | Black



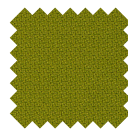
348 | Graphite



349 | Brick



356 | Red



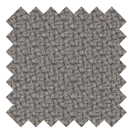
357 | Green



358 | Orange



362 | Avio

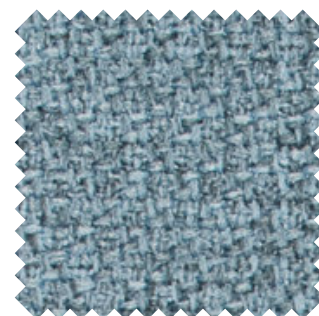


366 | Grey



STEP MELANGE

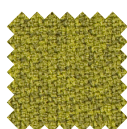
There's something quite sensuous about Step Melange which, with its two nuances, makes the eyes explore and the hands wander over the voluminous fabric.



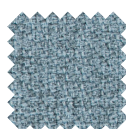
Specifications

- **Category C**
- **Composition** | 100% Trevira CS
- **Weight** | 470 g/lm
- **Width** | 140 cm
- **Abrasion** | Martindale 100.000 turns EN ISO 12947-2; Double Rubs Wyzenbeek 100.000 turns ASTM D4157-07
- **Pilling** | Grade 4-5 EN ISO 12945-2; Grade 5 ASTM D3511
- **Light fastness** | Grade 5-7 EN ISO 105-B02; Grade 4-5 AATCC 16
- **Rubbing fastness** | Grade 4-5/4-5 (wet/dry) EN ISO 105x12; Grade 4-5/4-5 (wet/dry) AATCC 8 or 116
- **Flammability** | AM 18 - NF D 60-013 (only for fabric); BS EN 1021 1&2 Cigarette and match; BS EN 1021-1 Cigarette; BS 5852 Part 1 0-1 Cigarette and match; BS 5852 Crib 5; BS 7176 Medium Hazard; CA TB 117-2013; DIN 4102 B1; DIN EN 13501-1 B-s1; FAR/JAR 25.853 (a) (i) (ii); IMO MSC 307(88) Annex 1 part 8; MED Certificate IMO; ÖNORM B 3825-B1-3800-Q1 UK; UNI 9175 Class 1 | EMME
- **Environment** | n/a
- **Labelling** | STANDARD 100 by OEKO-TEX®, EU Ecolabel®, TREVIRA CS®
- **Maintenance** | First absorb as much of the liquid as possible with plain white kitchen paper towelling or a cloth. If the spot has dried, remove as much as possible by vacuuming. Rub gently with a clean white cloth. Press a dry tea towel or piece of plain white kitchen roll against the fabric each time liquid is added so that moisture and impurities are absorbed. Use pure water without soap for the last washing.
- **Colours availability** | 8 standard colours - 54 total colours

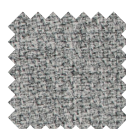
Colour scale



30A | Green



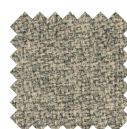
30B | Azure



30C | Light grey



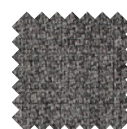
30D | Blue grey



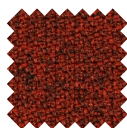
30E | Beige



30F | Clay



30G | Dark grey

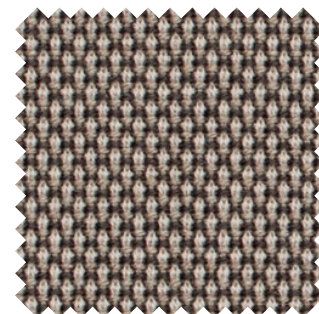


30L | Brick



BREEZE FUSION

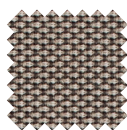
Breeze Fusion is a richly textured, woollen upholstery fabric brought to life by intriguing colour blends. It offers superior durability, inherent fire resistance and a strong environmental profile.



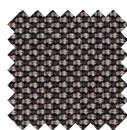
Specifications

- **Category F**
- **Composition** | 88% New Zealand wool / 12% polyamide
- **Weight** | 590 g/lm
- **Width** | 140 cm
- **Abrasion** | Martindale 100.000 turns EN ISO 12947-2; Martindale 100.000 turns ASTM D4966-02
- **Pilling** | Grade 4-5 EN ISO 12945-2; Grade 5 ASTM D4970
- **Light fastness** | Grade 5-7 EN ISO 105-B02; Grade 5 AATCC 16
- **Rubbing fastness** | Grade 4-5/4-5 (wet/dry) EN ISO 105x12; Grade 4-5/4-5 (wet/dry) AATCC 8 or 116 crocking
- **Flammability** | BS EN 1021 1&2 Cigarette and match; BS 5852 Part 1 0-1 Cigarette & match; CA TB 117-2013 UNI 9175 Class 1 | EMME
- **Environment** | n/a
- **Labelling** | STANDARD 100 by OEKO-TEX®, EU Ecolabel®
- **Maintenance** | Wool is antistatic and does not attract dirt like other fabrics. Wool is also water repellent, so spillages are slow to penetrate the fabric. To maintain the beautiful colour and appearance of the fabric, we recommend gentle vacuuming, preferably every week, with a soft nozzle. Most stains and dirt can be removed using an ordinary pH-neutral detergent diluted in lukewarm water at normal strength.
- **Colours availability** | 8 standard colours - 44 total colours

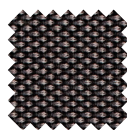
Colour scale



742 | Beige grey



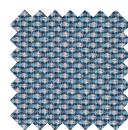
743 | Grey brown



744 | Grey graphite



745 | Graphite black



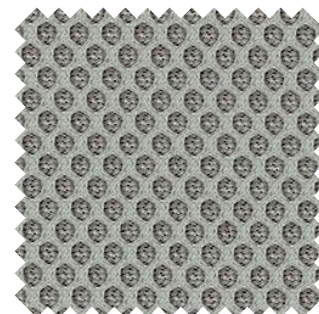
746 | Grey azure



RUNNER*

(*Subject to availability)

With its semi-transparent quality and soft 3D appearance Runner is a highly visual and eye-catching fabric. It is perfect for upholstering both furniture and screens.



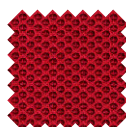
Specifications

- **Category B**
- **Composition** | 100% polyester
- **Weight** | 510 g/lm
- **Width** | 160 cm
- **Abrasion** | Martindale 70.000 turns EN ISO 12947-2; Double Rubs Wyzenbeek 100.000 turns ASTM D4157-07
- **Pilling** | Grade 5 EN ISO 12945-2; Grade 5 ASTM D3511
- **Light fastness** | Grade 5-7 EN ISO 105-B02; Grade 4 AATCC 16
- **Rubbing fastness** | Grade 4-5/4-5 (wet/dry) EN ISO 105x12; Grade 4-5/4-5 (wet/dry) AATCC 8 or 116
- **Tensile strength** | n/a
- **Flammability** | BS EN 1021-1 Cigarette; BS EN 1021-2 Match; CA TB 117-2013; UNI 9175 class 2 | EMME
- **Environment** | 100% recyclable polyester
- **Labelling** | STANDARD 100 by OEKO-TEX®, Cradle to Cradle Certified™ Bronze
- **Maintenance** | For normal maintenance and cleaning, use often the vacuum cleaner with appropriate part for fabric, and if necessary, cover the part with a soft cloth. For a deeper cleaning use a dry detergent for fabrics. Do not use anything petroleum based.
- **Colours availability** | 8 standard colours - 24 total colours

Colour scale



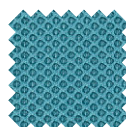
824 | Black



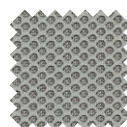
830 | Red



831 | Dark grey



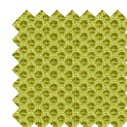
832 | Azure



840 | Light grey



842 | Blue



843 | Green

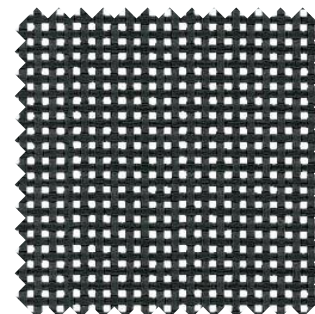


845 | Silver grey



MESH

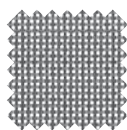
Fabric with high aesthetic value for design and comfort. Excellent dimensional stability and exceptional resistance to external conditions. Extreme tear resistance. Quick drying thanks to the open construction.



Specifications

- **Category N**
- **Composition** | 100% polyester
- **Weight** | 500 g/lm
- **Width** | 180 cm
- **Abrasion** | Martindale 120.000 turns EN ISO 12947-2
- **Pilling** | n/a
- **Light fastness** | Grade 4-5 EN ASTM G154
- **Rubbing fastness** | n/a
- **Tensile strength** | 240/240 daN/5 cm EN ISO 1421
- **Flammability*** | CA TB 117; DIN 4102-1 B1; EN 13501-1 B-s2,d0; NFP 92-507 M2
- **Environment** | 100% recyclable polyester
- **Labelling** | Phthalate Free
- **Maintenance** | For normal cleaning, dust mesh with vacuum cleaner or with a soft brush. In case of stains, wash with a soft brush or with a sponge using a solution of water and detergent, rinse a lot with water and let the mesh dry in open air.
- **Colours availability** | 6 standard colours - 33 total colours

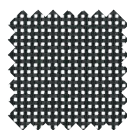
Colour scale



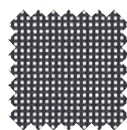
01N | Silver*



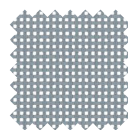
02N | White



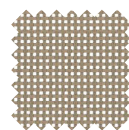
03N | Black



04N | Graphite



06N | Grey

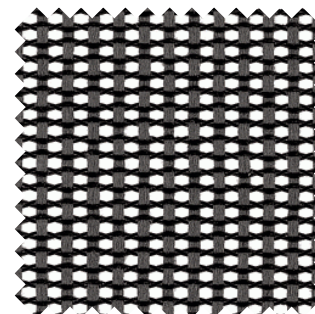


07N | Beige



ELASTIC MESH

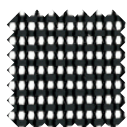
Elastic Mesh has a polyester co-polymer elastomeric monofilament on the warp direction. When stretched, this material yields excellent load bearing properties and resiliency.



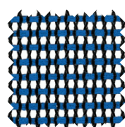
Specifications

- **Category X**
- **Composition** | 70% polyester elastomer / 30% polyester yarns
- **Weight** | n/a
- **Width** | 150 cm
- **Abrasion** | Double Rubs Wyzenbeek 50.000 turns ASTM D4157-07; Passed 50.000 cycles ASTM D 3597-95A sec. 7.4
- **Pilling** | Grade 5 ASTM D3511-82
- **Light fastness** | Grade 5 AATCC 16
- **Rubbing fastness** | Grade 5/4-5 (wet/dry) AATCC 8 or 116
- **Breaking strength** | 406.7/233.0 (Warp/Fill) ASTM D 5034-95
- **Flammability** | BS 5852 Part 1 0-1 Cigarette & match; CA TB 117-2013
- **Environment** | 100% recyclable polyester
- **Labelling** | n/a
- **Maintenance** | For normal cleaning, dust mesh with vacuum cleaner or with a soft brush. In case of stains, wash with a soft brush or with a sponge using a solution of water and detergent, rinse a lot with water and let the mesh dry in open air.
- **Colours availability** | 7 standard colours - 10 total colours

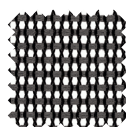
Colour scale



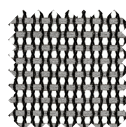
01 | Black



11 | Blue



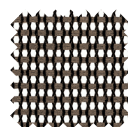
20 | Graphite



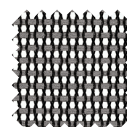
21 | Light grey



24 | White black



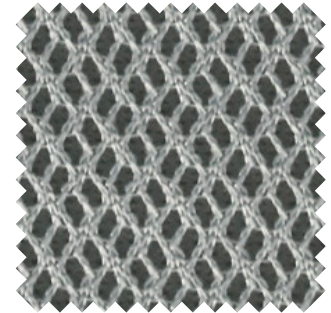
50 | Greige



55 | Turtle dove

RHYTHM

Rhythm is a unique, self-supporting mesh fabric with supreme fire-retardant performance.



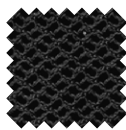
Specifications

- **Category X**
- **Composition** | 100% polyester
- **Weight** | 525 g/lm
- **Width** | 160 cm
- **Abrasion** | Martindale 70.000 turns EN ISO 12947-2; Double Rubs Wyzenbeek 100.000 turns ASTM D4157-07
- **Pilling** | Grade 5 EN ISO 12945-2; Grade 5 ASTM D3511
- **Light fastness** | Grade 5-7 EN ISO 105-B02; Grade 4-5 AATCC 16
- **Rubbing fastness** | Grade 4-5/4-5 (wet/dry) EN ISO 105x12; Grade 5/5 (wet/dry) AATCC 8 or 116
- **Tensile strength** | n/a
- **Flammability** | BS EN 1021-1 Cigarette; BS EN 1021-2 Match; BS 5852 Part 1 0-1 Cigarette & match; BS 5852 Crib 5; BS 7176 Medium Hazard; CA TB 117-2013; DIN 4102 B1; NF P 92-503 M3; UNI 8456 class 1; UNI 9174 class 1
- **Environment** | n/a
- **Labelling** | STANDARD 100 by OEKO-TEX®
- **Maintenance** | For normal maintenance and cleaning, use often the vacuum cleaner with appropriate part for fabric, and if necessary, cover the part with a soft cloth. For a deeper cleaning use a dry detergent for fabrics. Do not use anything petroleum based.
- **Colours availability** | 9 standard colours - 16 total colours

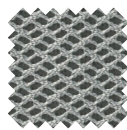
Colour scale



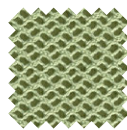
33R | Black



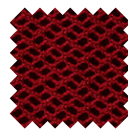
34R | Dark grey



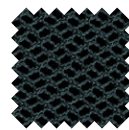
35R | Grey



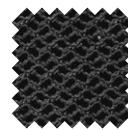
37R | Green



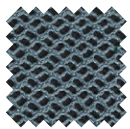
39R | Red



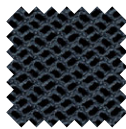
41R | Dark green



54R | Medium grey



55R | Azure grey



67R | Blue



LEATHER

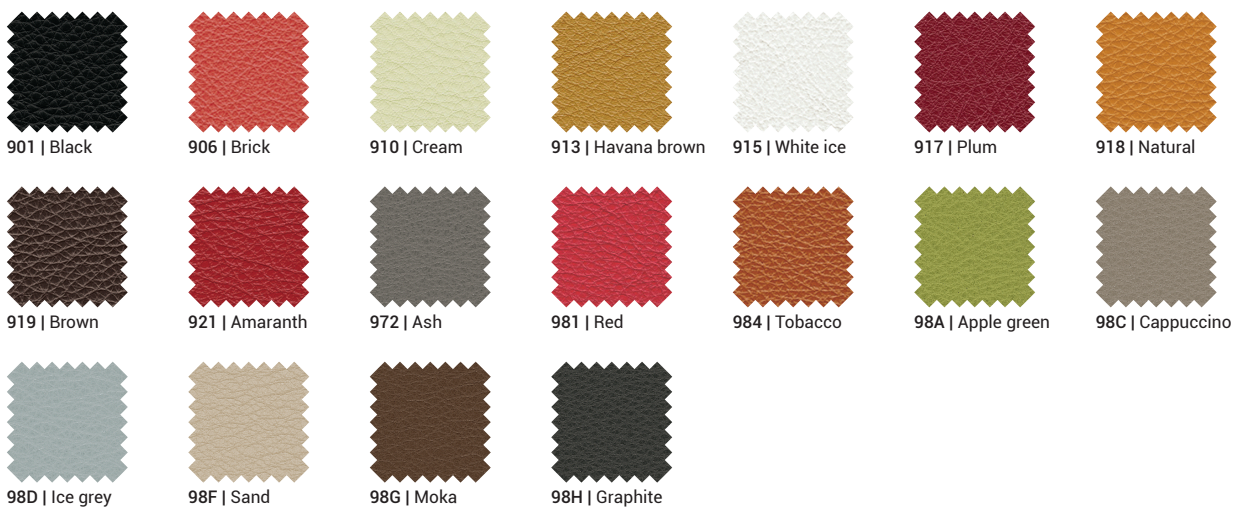
Aniline-dyed full grain leather with a silky touch. Wrinkles and scratches are visible and enhance its naturalness.



Specifications

- **Category E**
- **Composition** | Full grain bovine leather
- **Type of leather** | Corrected grain, pre-embossed leather
- **Origin** | Europe
- **Average size** | 5,0/5,5 m2
- **Thickness** | 1,2/1,3 mm
- **Tannage** | Chrome tannage
- **Dyeing** | Aniline
- **Finishing** | Polyurethane
- **Colour fastness** | 4/5
- **Light fastness** | Grade 6 UNI EN ISO 105-B02
- **Rubbing fastness** | Grade 5/5 (wet/dry) UNI EN ISO 11640
- **Ultimate tensile strength** | 140 KG cm2
- **Tear resistance** | >20N UNI EN ISO 3377-1
- **Adhesion of finishing** | >2N/10mm UNI EN ISO 11644
- **Flex Resistance** | 20000 Cycles (no damage) UNI EN ISO 5402
- **Ph value and extract** | Ph \geq 3,5; Δ pH \leq 0,7 UNI ISO 4045
- **Azo-dyes** | Not present (<30 ppm) CEN ISO/TS 17234
- **Pentachlorophenol content** | < 5 ppm CEN/TS 14994
- **Hexavalent chromium content** | < 3,0 mg/kg CEN/TS 14495
- **Formaldehyde content** | < 75 ppm CEN ISO/TS 17226-1
- **Flammability** | n/a
- **Environment** | n/a
- **Labelling** | n/a
- **Maintenance** | To cancel marks and spills a damp cloth should be used adding, only when necessary, a solution made with particularly delicate products such as mild pure soap. Avoid to rub the leather surface; spills should be dabbed of proceeding from its limits towards its centre. Do not use aggressive abrasive products (solvent, spills removers) steam or products for leather shoes. Once the cleaning process is completed, its surface needs to be immediately dried using a soft, dry cloth.
- **Colours availability** | 18 standard colours - 19 total colours

Colour scale



PREMIUM LEATHER

Silky and smooth, compact and resistant, full and embraising. The Premium leather has an extremely full range for an infinite combination of colours.



Specifications

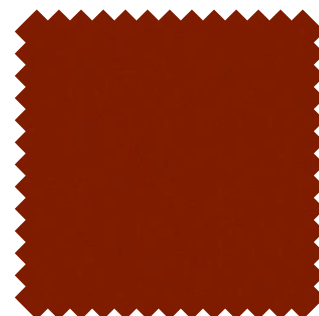
- **Category H**
- **Composition** | Full grain bovine leather
- **Type of leather** | Corrected grain
- **Origin** | Europe
- **Average size** | 5,0/5,5 m2
- **Thickness** | 1,2/1,4 mm
- **Tannage** | Chrome tannage
- **Dyeing** | Aniline
- **Finishing** | n/a
- **Colour fastness** | Grade 3-4 UNI EN ISO 11640
- **Light fastness** | Grade 6 UNI EN ISO 105-B02
- **Rubbing fastness** | Grade 3-4/4 (wet/dry) UNI EN ISO 11640
- **Ultimate tensile strength** | n/a
- **Tear resistance** | ≥ 20 N UNI EN ISO 3377-1
- **Adhesion of finishing** | ≥ 2 N/10mm UNI EN ISO 11644
- **Flex Resistance** | No cracks UNI EN ISO 5402
- **Ph value and extract** | $\text{Ph} \geq 3,5$; $\Delta\text{pH} \leq 0,7$ UNI ISO 4045
- **Azo-dyes** | Not present (< 30 ppm) CEN ISO/TS 17234
- **Pentachlorophenol content** | ≤ 1 mg/kg UNI EN ISO 17070
- **Hexavalent chromium content** | ≤ 3 mg/kg UNI EN ISO 17075
- **Formaldehyde content** | < 75 ppm CEN ISO/TS 17226-1
- **Flammability** | UNI EN 1021-1 Cigarette, UNI EN 1021-2 Match, NFPA 260/UFAC, IMO Resolution A652 (16), California TB 117 Section E
- **Environment** | Environmental Product Declaration & Process EPD (ISO 14025), Carbon Footprint of Product (ISO/TS 14067:2013)
- **Labelling** | Leather From Italy Full Cycle (UNI EN 16484), Der BLAue Engel (RAL UZ 148)
- **Maintenance** | To cancel marks and spills a damp cloth should be used adding, only when necessary, a solution made with particularly delicate products such as mild pure soap. Avoid to rub the leather surface; spills should be dabbed of proceeding from its limits towards its centre. Do not use aggressive abrasive products (solvent, spills removers) steam or products for leather shoes. Once the cleaning process is completed, its surface needs to be immediately dried using a soft, dry cloth.
- **Colours availability** | 12 standard colours - 110 total colours

Colour scale



SADDLE LEATHER

In spite of the high strength the Saddle Leather is keeping flat and elegant and stands out of its high charisma. It is beautiful soft and full breathable.



Specifications

- **Category S**
- **Composition** | Bovine leather
- **Type of leather** | Raw hides
- **Origin** | n/a
- **Average size** | n/a
- **Thickness** | 1,9/2,1 mm
- **Tannage** | Chrome tannage
- **Dyeing** | Aniline
- **Finishing** | Pigment finishing
- **Colour fastness** | n/a
- **Light fastness** | Grade 4-5 UNI EN ISO 105-B02
- **Rubbing fastness** | Grade 5/5 (wet/dry) UNI EN ISO 11640
- **Ultimate tensile strength** | n/a
- **Flex resistance** | 20.000 cycles no damage
- **Adhesion of finishing** | >15N/10mm UNI EN ISO 11644
- **Flex Resistance** | No cracks UNI EN ISO 5402
- **Abrasion** | Grade 4-5 500 cycles wheel CS10 load 500gr
- **Ph value and extract** | n/a
- **Azo-dyes** | n/a
- **Pentachlorophenol content** | n/a
- **Hexavalent chromium content** | n/a
- **Formaldehyde content** | n/a
- **Flammability** | BS 5852: Source 0; UNI 9175 Class 2 IM
- **Environment** | n/a
- **Labelling** | n/a
- **Maintenance** | To cancel marks and spills a damp cloth should be used adding, only when necessary, a solution made with particularly delicate products such as mild pure soap. Avoid to rub the leather surface; spills should be dabbed of proceeding from its limits towards its centre. Do not use aggressive abrasive products (solvent, spills removers) steam or products for leather shoes. Once the cleaning process is completed, its surface needs to be immediately dried using a soft, dry cloth.
- **Colours availability** | 4 standard colours - 26 total colours

Colour scale



S01 | Black



S02 | White



S03 | Dark brown



S05 | Bulgarian red

NYLON

High performance polyamide 6. In molded parts the material offers an excellent balance of easy design and processing with outstanding mechanical properties over a wide temperature range and in different conditions.



Specifications

- **Category P**
- **Composition** | Polyamide 6
- **Tensile modulus** | 3200 /1000 N/mm² (dry/cond) ISO 527-1/2
- **Yield stress** | 85 /45 N/mm² (dry/cond) ISO 527-1/2
- **Yield strength** | 4 /25 % (dry/cond) ISO 527-1/2
- **Nominal strain at break** | 20/>50 % (dry/cond) ISO 527-1/2
- **Flammability** | Class 2 UNI 9174; Class 1 UNI 9174 on request.
- **Maintenance** | For normal maintenance and cleaning, use a soft clean cloth damp with warm water and detergents or disinfectants not too alkaline. Wipe with a soft dry cloth or with absorbent paper. To obtain a better cleaning, vapour could be used.
- **Used in** | Finn Chair.
- **Colours availability** | 5 standard colours

Colour scale



115 | Black



029 | Blue



030 | Aquamarine



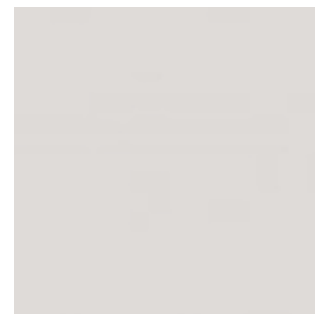
095 | Grey



100 | White

REINFORCED NYLON

High performance polyamide 6 GF30. The material offers an excellent balance of stiffness and toughness, good electrical and flammability properties, good abrasion and chemical resistance.



Specifications

- **Category P**
- **Composition** | Polyamide 6- 30% glass fibre reinforced.
- **Tensile modulus** | 9800 /5800 N/mm² (dry/cond) ISO 527-1/2
- **Yield stress** | 190 /115 N/mm² (dry/cond) ISO 527-1/2
- **Yield strength** | 3.5 /6 % (dry/cond) ISO 527-1/2
- **Environment** | The good melt stability of nylon resin normally enables the recycling of properly handled waste.
- **Maintenance** | For normal maintenance and cleaning, use a soft clean cloth damp with warm water and detergents or disinfectants not too alkaline. Wipe with a soft dry cloth or with absorbent paper. To obtain a better cleaning, vapour could be used.
- **Used in** | Pyla Chair, Una Plus.
- **Colours availability** | 3 standard colours.

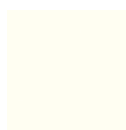
Colour scale



115 | Black



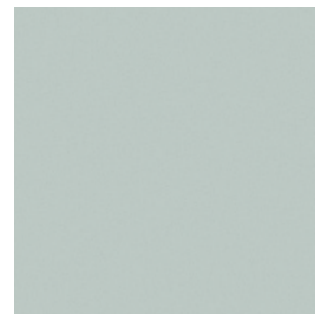
095 | Grey



100 | White

POLYURETHANE

Polyurethane (PU) is a synthetic foam material. The cellular structure of PU foams can be varied to meet different requirements, ranging from flexible, elastic materials to solid, rigid components.



Specifications

- **Category U**
- **Composition** | Integral self-skinning polyurethane foam.
- **Density** | 400 kg/m³
- **Tensile strength** | 11-70 kg/cm² DIN 53504
- **Tear strength** | 2-13 kg/cm DIN 53575
- **Elongation at break** | 130-140 % DIN 53504
- **Hardness at 23°C** | 65-70 Shore A ASTM D 2240
- **Compression Load Deflection (50%)** | 1,6 kg/cm² ASTM 2406/68
- **Flammability** | American FMVSS 302; CA TB 117-2013
- **Maintenance** | For normal maintenance and cleaning, use a soft clean cloth damp with warm water and detergents or disinfectants not too alkaline. Wipe with a soft dry cloth or with absorbent paper. To obtain a better cleaning, vapour could be used.
- **Colours availability** | 7 standard colours

Colour scale



115 | Black



029 | Blue



030 | Aquamarine



095 | Grey



100 | White



R07 | Yellow



R06 | Red



ICF S.p.A.
Via Cassanese 108 - 20052 Vignate (MI) | Italy
t. +39 02 9508031 | f. +39 02 95364012
info@icf-office.it